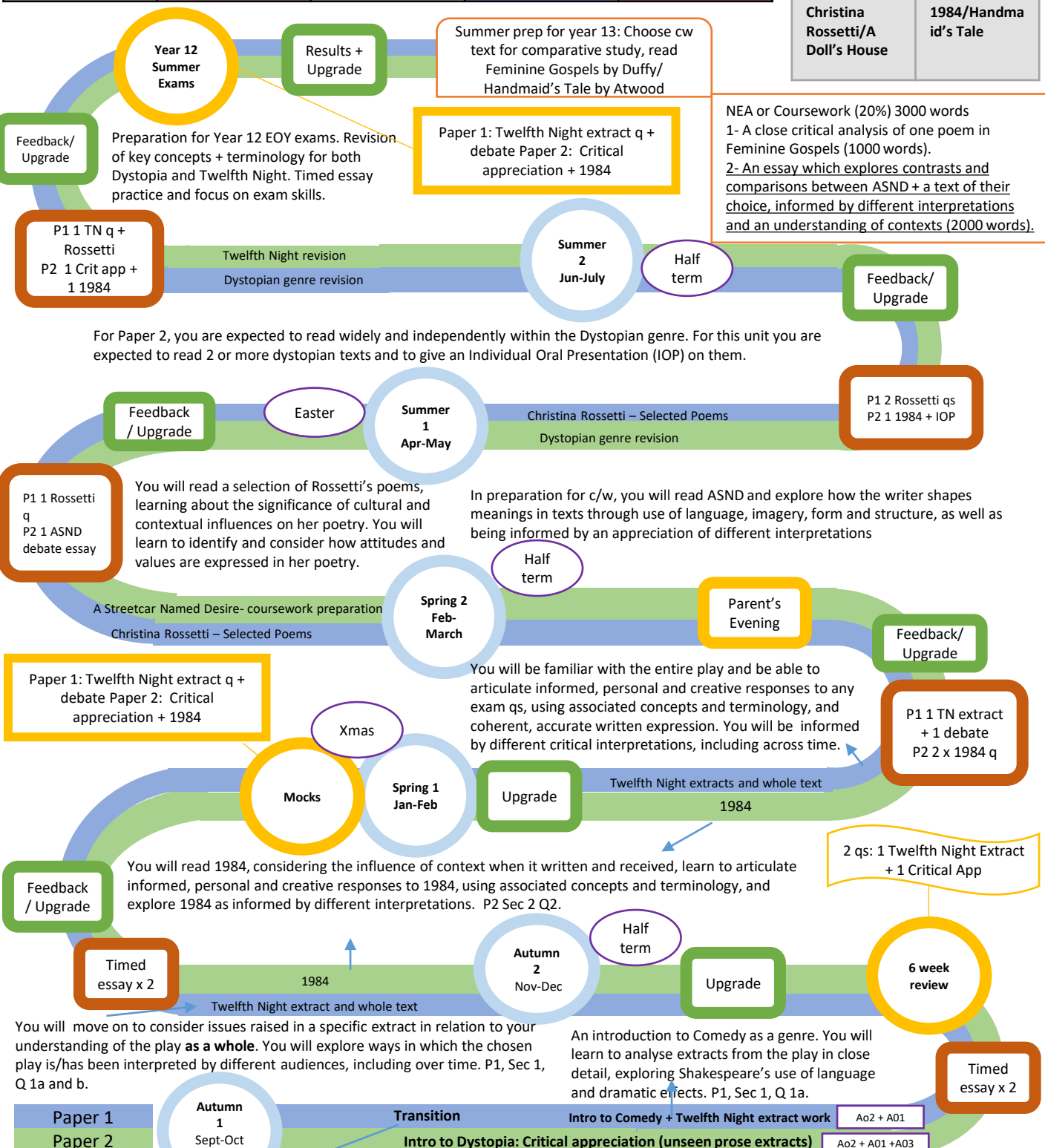


KS5 English Literature Learning Journey: Year 12

Name:
P1 teacher:
P2 teacher:

| AO1 | AO2 | AO3 | AO4 | AO5 |
|---|--|---|--|---|
| Articulate informed, personal and creative responses to literary texts, using associated concepts and terminology, and coherent, accurate written expression. | Analyse ways in which meanings are shaped in literary texts. | Demonstrate understanding of the significance and influence of the contexts in which literary texts are written and received. | Explore connections across literary texts. | Explore literary texts informed by different interpretations. |
| FLUENCY | ANALYSIS | CONTEXT | COMPARE | CRITICS |

| | |
|---|---|
| Paper 1 (40%) Sec1: 1 a) Twelfth Night extract 1 b) Twelfth Night debate | Paper 2 (40%) Sec 1: Critical Appreciation |
| Sec 2: Christina Rossetti/A Doll's House | Sec 2: 1984/Handmaid's Tale |



A transition unit to ease you in to A Level, explaining the expectations, AOs, skills and differences between a GCSE exam answer and A Level.

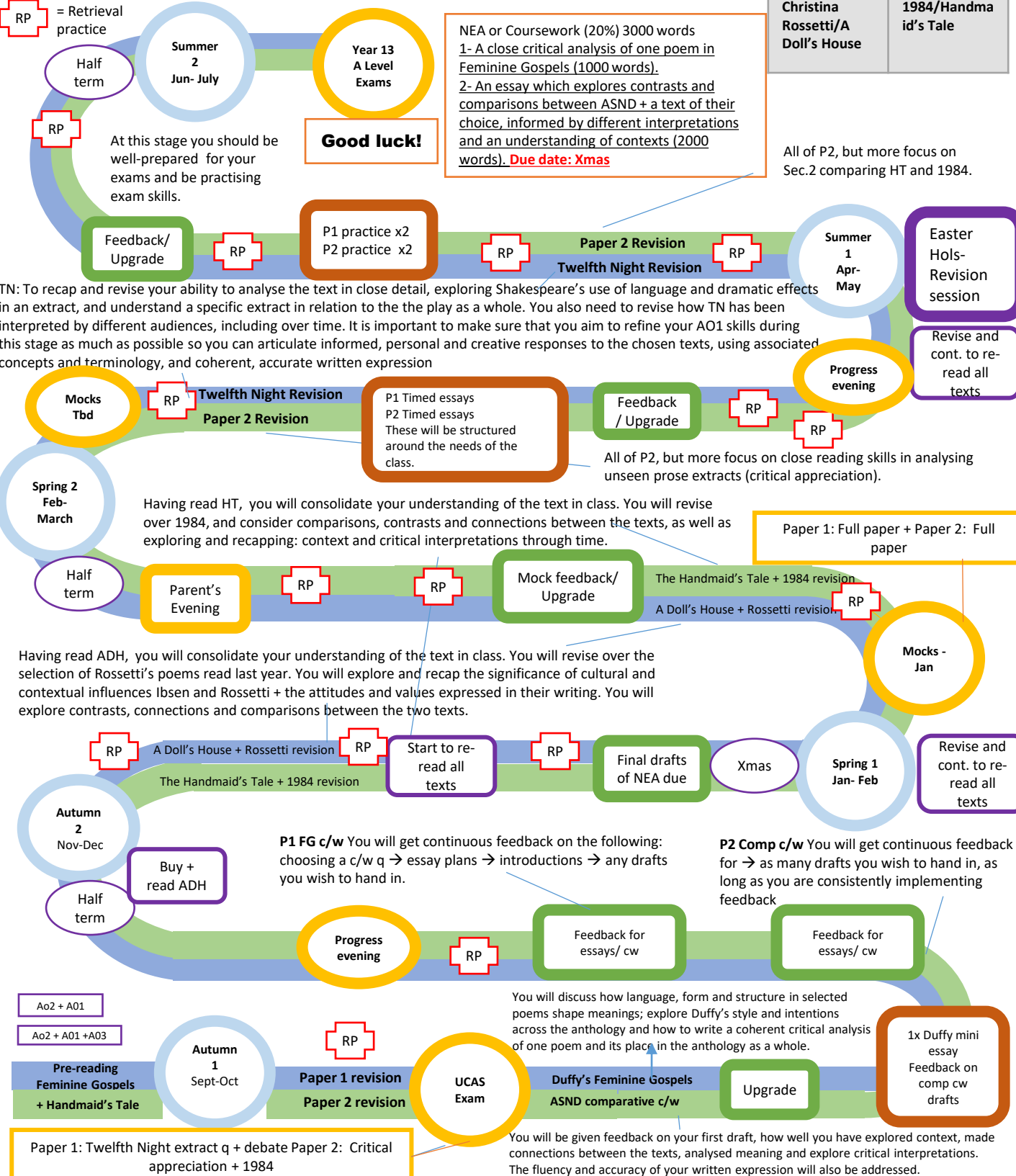
An introduction to the Dystopian genre of fiction. You will be learning: close reading skills in analysing unseen prose extracts; how to identify and consider how attitudes and values are expressed in unseen extracts; how to communicate fluently, accurately and effectively your knowledge, understanding and judgement of unseen extracts.

KS5 English Literature Learning Journey: Year 13

Name:
P1 teacher:
P2 teacher:

| AO1 | AO2 | AO3 | AO4 | AO5 |
|---|--|---|--|---|
| Articulate informed, personal and creative responses to literary texts, using associated concepts and terminology, and coherent, accurate written expression. | Analyse ways in which meanings are shaped in literary texts. | Demonstrate understanding of the significance and influence of the contexts in which literary texts are written and received. | Explore connections across literary texts. | Explore literary texts informed by different interpretations. |
| FLUENCY | ANALYSIS | CONTEXT | COMPARE | CRITICS |

| | |
|--|---|
| Paper 1 (40%) Sec1: 1 a) Twelfth Night extract 1 b) Twelfth Night debate | Paper 2 (40%) Sec 1: Critical Appreciation |
| Sec 2: Christina Rossetti/A Doll's House | Sec 2: 1984/Handmaid's Tale |



All of P2, but more focus on Sec.2 comparing HT and 1984.